



GOVIANU GOKULAM

CONTACT : - +91 8088 330 330

WEBSITE : www.govianu.com

EMAIL : Info@govianu.com

EXCLUSIVE LIFESTYLE, ELITE NEIGHBOURHOODS, SUPREME CONSTRUCTION QUALITY



GOVIANU has emerged as one of the most respected general contracting firms in the area of commercial and private constructions. The company has already proven its ability to take on large complex projects and complete them on time, on budget and at the highest level of quality. Over the last decade, the Govianu Group has firmly established itself as one of the leading developers of real estate in Bangalore by imprinting its indelible mark across all asset classes.

Founded in 2010, with the spirit of innovation at its core, GOVIANU always strives for quality, customer focus, robust engineering, uncompromising business ethics and steadfast commitment to timeless values and total transparency in every aspect of its business. These exceptional attributes have made Govianu progress consistently. The company already has several successful completed and ongoing projects in Bangalore, Mysore, Chikmagalur and Tumkur to its credit, and currently has one million sq. ft. under various stages of construction in residential, commercial and hospitality sectors. Innovation in our offerings combined with an emphasis on contemporary architecture, strong project execution and quality construction have helped us transform into a respectful brand that contributes to the fine art of living.

GOVIANU GOKULAM

Govianu Gokulam is an exceptionally designed and well laid-out luxury apartment at Sanjaynagar, Bangalore, located just 200 meters from Vaibhav theater. This project features spaciouly designed 3BHK homes in a structure of parking + 4 floors. With minimalistic architecture, wide open spaces that allow fresh air and natural light to cascade in, immaculate attention to detail and a range of highly curated amenities, this is a residential project that has been crafted to perfection.

Govianu Gokulam promises you a smoothly flowing life in a home with beautifully crafted features. Centrally located with ready access to all the city's conveniences- be it shops, restaurants, schools, recreational centers etc. This project has great connectivity to major landmarks across the city like the Kempegowda International Airport, Outer Ring Road and MG Road which makes this a highly desirable location at the heart of Bangalore.

Discover a home with style where you can lead a life of ease. This stunning apartment will help you start living a life of luxury.



TRANSPORT

- Bhoopsandra NTI Bus Stop - 5 min
- Bhoopasandra Bus Stand - 8 min
- Hebbal Metro Station -10 min
- Kempegowda International Airport - 30 min

HEALTH CARE

- Manipal Hospital - 12 min
- Ramaiah Memorial Hospital - 8 min
- Bangalore Baptist Hospital -10 Min
- Rainbow Childrens Hospital -20 min

SHOPPING AND ENTERTAINMENT

- Esteem Mall-4 min
- Vaibhav Theatre-7 min
- Vaishnavi Sapphire Centre - 15 min
- Orion Mall - 20 min

NEAR BY LAND MARKS

- Vidyasagar Preschool
- Hebbal- 5 min
- BEL circle - 10 min
- Four Seasons Hotel - 10 min
- Kendriya Vidyalaya - 15 min
- Orchids The International School -10 min
- Iskcon Temple - 20 min
- Ramaiah Institute of Technology - 10 min

IT HUBS

- L & T Tech park-22 min
- Eco Polis - 30 min
- ManyataTech park-22 min
- NorthGate Office Park- 45 min

LOCATION MAP



AMENITIES



24X7 100% POWER BACKUP



ROUND THE CLOCK SECURITY



LUSH GREEN ENVIRONMENT WITH MANICURED GARDEN



24X7 CCTV SURVEILLANCE



COVERED CAR PARK



24X7 WATER SUPPLY CAUVERY AND BOREWELL

E

PROJECT HIGHLIGHTS

- NUMBER OF FLOORS : PARKING + 4
- NUMBER OF FLATS : 12
- 3 FLATS PER FLOOR
- 1 CAR PARKING LOT PER UNIT
- 100% VAASTU COMPLAINT
- 3 SIDES NO COMMON WALL
- LAVISH SIZE ROOMS
- TEAK WOOD MAIN DOORS
- SPACIOUS BALCONIES
- PREMIUM MATERIALS AND HIGH- END FINISHES.
- COVERED CAR PARK
- LED LIGHTING FIXTURES
- GROHE SANITARY FIXTURES
- 24X7 100% POWER BACKUP
- ROUND THE CLOCK SECURITY
- 24X7 WATER SUPPLY CAUVERY AND BOREWELL



1. FOYER
5'0" X 5'0"

5. TOILET
8'0" X 5'0"

9. BALCONY
12'0" X 3'6"

13. UTILITY
9'6" X 3'6"

2. LIVING
13'0" X 16'0"

6. BALCONY
4'6" X 5'0"

10. DINING
11'6" X 11'0"

14. MASTER
BEDROOM
13'0" X 14'6"

3. POOJA
4'0" X 4'6"

7. C. TOILET
5'0" X 7'0"

11. BALCONY
11'6" X 4'6"

15. DRESSER
6'0" X 7'9"

4. BEDROOM 3
13'0" X 11'0"

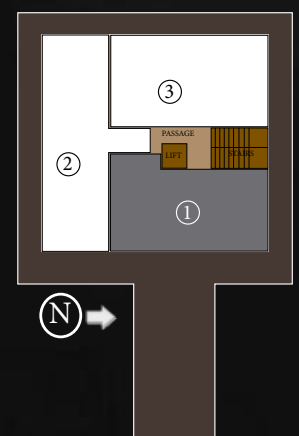
8. BEDROOM 2
12'0" X 11'0"

12. KITCHEN
9'6" X 11'6"

16. A. TOILET
6'6" X 7'3"



UNIT - 1
3 BHK

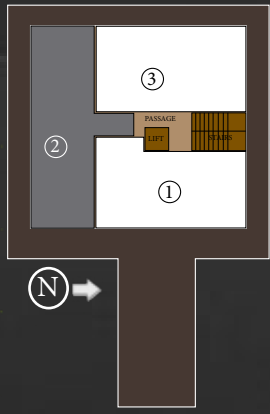


UNIT - 2

3 BHK



- 1. FOYER
6'3" X 9'0"
- 2. LIVING
13'9" X 13'3"
- 3. DINING
8'0" X 13'0"
- 4. BALCONY
13'0" X 7'0"
- 5. C.TOILET
8'0" X 5'0"
- 6. KITCHEN
7'6" X 12'9"
- 7. UTILITY
5'0" X 6'9"
- 8. DRESSER
6'0" X 5'6"
- 9. BEDROOM 2
11'6" X 11'6"
- 10. A.TOILET
6'0" X 6'9"
- 11. BALCONY
8'0" X 3'6"
- 12. BEDROOM 3
11'3" X 12'9"
- 13. DRESSER
10'6" X 5'6"
- 14. A.TOILET
8'9" X 5'6"
- 15. MASTER
BEDROOM
12'9" X 12'9"



NORTH FACING

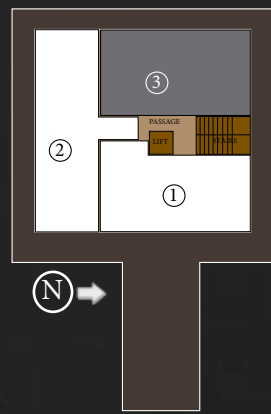


UNIT - 3

3 BHK



- 1. FOYER
5'0" X 8'3"
- 2. LIVING
14'0" X 14'0"
- 3. C.TOILET
6'6" X 6'3"
- 4. DINING
10'6" X 7'0"
- 5. KITCHEN
8'0" X 11'0"
- 6. BALCONY/UTILITY
10'6" X 6'6"
- 7. MASTER BEDROOM
12'6" X 14'0"
- 8. DRESSER
6'6" X 6'8"
- 9. A. TOILET
5'6" X 8'6"
- 10. BEDROOM 2
12'0" X 11'0"
- 11. A.TOILET
8'0" X 5'0"
- 12. BEDROOM 3
12'0" X 11'0"



EAST FACING





JUDICIAL LAYOUT,
BENGALURU

GOVIANU MADRE DIVINA



YELAHANKA,
BENGALURU

GOVIANU YELAHANKA



SAHAKARNAGAR,
BENGALURU

GOVIANU JODIDHAR ATLANTIS



JALAHALLI,
BENGALURU

GOVIANU HMT



CUNNINGHAM ROAD,
BENGALURU

GOVIANU CUNNINGHAM



DOLLAR'S COLONY,
BENGALURU

GOVIANU BOUGAINVILLA



ITTIGE GUDU,
MYSORE

GOVIANU GURIKAR LUXURIA



YELAHANKA,
BENGALURU

GOVIANU SANGAM



SESHADRIPURAM,
BENGALURU

GM GOVIANU

GOVIANU



DOLLAR'S COLONY,
BENGALURU

GOVIANU PANTHEON



SANJAY NAGAR,
BENGALURU

GOVIANU SUBHRAM



VIJAYANAGAR,
BENGALURU

GOVIANU NAKSHATHRA



SANJAY NAGAR,
BENGALURU

GOVIANU SWATHI



MALLESHWARAM,
BENGALURU

GOVIANU MARGOSA



JOLDHAL,
CHIKMAGALUR

GOVIANU CHIKMAGULUR RESORT



YESHWANTHPUR,
BENGALURU

GOVIANU ACE GRAND



BENSON TOWN,
BENGALURU

GOVIANU BENSON



BENSON TOWN,
BENGALURU

GOVIANU GRACE GARDEN



GOVIANU GOKULAM

CONTACT : - +91 8088 330 330

WEBSITE : www.govianu.com

EMAIL : Info@govianu.com