



GOVIANU JODIDHAR ATLANTIS



GOVIANU

CONTACT: +91 8088330330

WEB SITE: WWW.GOVIANU.COM

E-MAIL: info@govianu.com

PROJECT HIGHLIGHTS

- Land area : 1 acre
- No of floors : 10 floors
- Road size : 60 feet
- No of flats : 88
- Parking : Basement covered and open
- 75% open space apartment (no common wall)
- Surrounded by lush greenery

Teak wood main door

- Lavish size rooms
- Spacious balconies, terraces and sit-outs.
- Premium material and high-end finishes.
- 100% vastu compliant
- Rain water harvesting system
- Sewage treatment plant
- 24x7 Water supply, both Cauvery and borewell.

AMENITIES



Swimming pool



Gym



Jogging track



kids play



Power backup



Green spaces



Club house



Round the clock security



24x7 CCTV surveillance



Steam, Sauna and Jacuzzi





Govianu Wealth Management Private Limited has emerged as one of the most respected general contracting firms in the area of commercial and private construction. We have already proven our ability to take on large, complex projects and complete them on time, on budget and at the highest levels of quality.

Our success is driven by building some of our corporate, institutional, residential and government clientele. More and more of our clients are turning to us for our distinctive ability to implement innovative project management techniques and to serve as a reliable provider of knowledge-driven solutions for their complex construction projects.

GOVIANU JODIDHAR ATLANTIS

An architectural marvel, surrounded by 200 acres of lush green landscape, in the heart of Sahakar Nagar - That is GOVIANU JODIDHAR ATLANTIS for you...!!

Govianu Jodidhar Atlantis, Sahakar Nagar is very close to IT hubs, World-class hospitals, International schools, leisure avenues and Kempegowda International Airport. This high rise residential property from GOVIANU offers beautiful and well designed 2 and 3 BHK luxury flats.

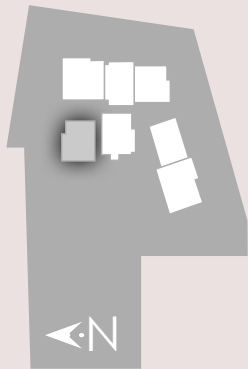
Emphasis has been placed on maximum natural light and ventilation which is available in abundance for each unit. With amenities such as Club house, swimming pool, private terrace garden, GOVIANU JODIDHAR ATLANTIS is a treasure trove of incredible experiences.

This project with high construction quality, is a great investment in Bangalore.

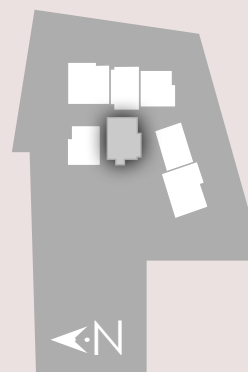


UNIT - 5 2 BHK

- | | |
|------------------------------|------------------------------|
| 1 LIVING
14'6" X 10'6" | 6 BEDROOM 2
11'4" X 12'0" |
| 2 DINING
16'0" X 9'6" | 7 BEDROOM 1
11'6" X 12'0" |
| 3 KITCHEN
9'6" X 9'6" | 8 A.TOILET
4'6" X 7'6" |
| 4 WET KITCHEN
8'3" X 4'6" | 9 BAY WINDOW
3'6" X 8'0" |
| 5 C.TOILET
8'3" X 4'6" | |



- | | |
|------------------------------|-------------------------------|
| 1 FOYER
5'2" X 4'2" | 7 C.TOILET
7'6" X 4'6" |
| 2 LIVING
11'6" X 13'0" | 8 BEDROOM 1
13'6" X 11'4" |
| 3 DINING
14'6" X 14'0" | 9 A.TOILET
7'6" X 4'6" |
| 4 BAY WINDOW
3'6" X 6'0" | 10 BEDROOM 2
11'4" X 11'4" |
| 5 KITCHEN
8'6" X 8'0" | 11 BAY WINDOW
3'0" X 7'0" |
| 6 WET KITCHEN
4'6" X 7'8" | |

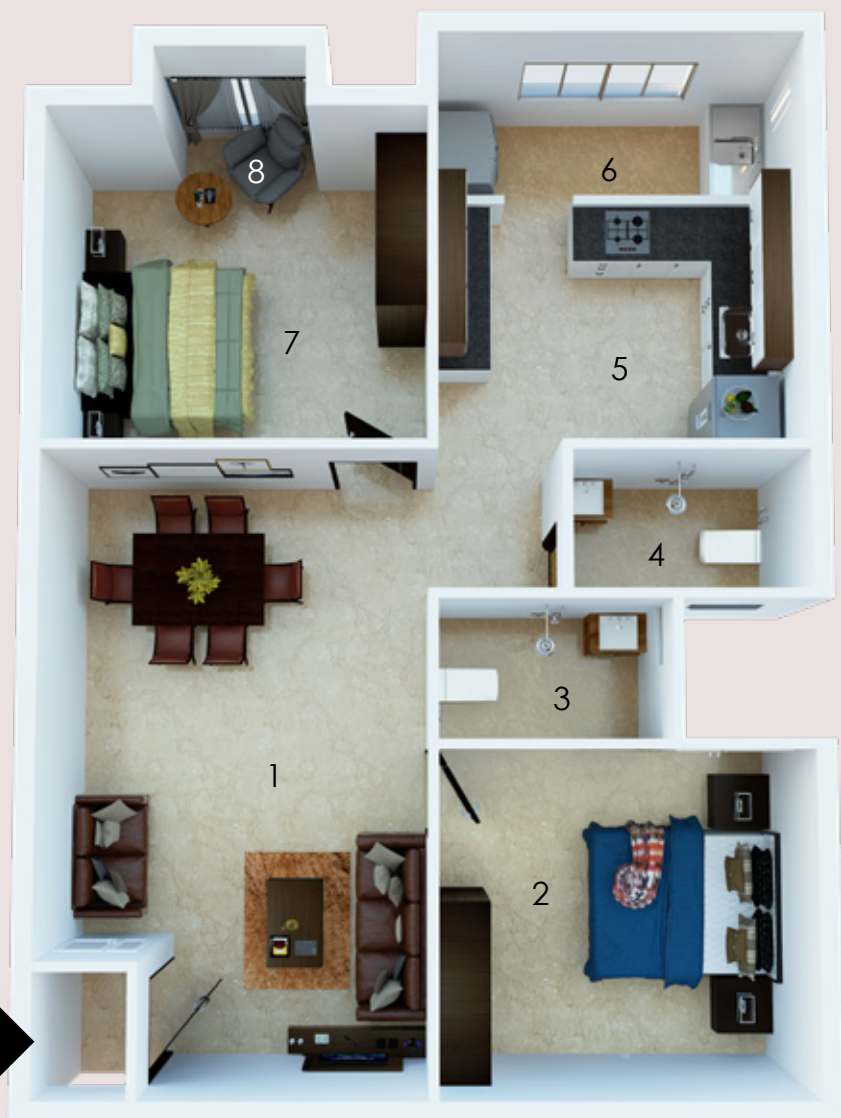
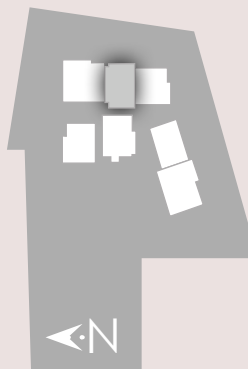


UNIT - 6 2 BHK

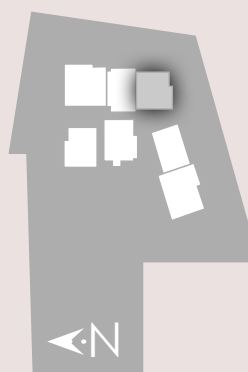


UNIT - 8 2 BHK

- | | |
|----------------------------------|-------------------------------|
| 1 LIVING/DINING
13'0" X 21'0" | 5 KITCHEN
12'0" X 9'8" |
| 2 BEDROOM 1
12'4" X 11'4" | 6 WET KITCHEN
12'0" X 3'6" |
| 3 A.TOILET
7'6" X 4'6" | 7 BEDROOM 2
12'8" X 11'4" |
| 4 C.TOILET
7'6" X 4'6" | 8 BAY WINDOW
5'0" X 2'0" |

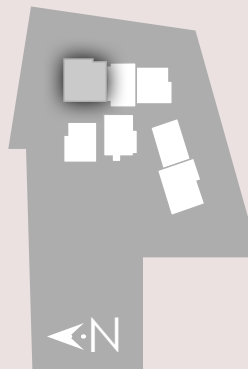


- | | |
|----------------------------------|------------------------------|
| 1 LIVING/DINING
16'4" X 18'8" | 5 C.TOILET
7'6" X 4'6" |
| 2 BEDROOM 2
12'4" X 10'6" | 6 A.TOILET
9'0" X 5'2" |
| 3 KITCHEN
11'6" X 8'2" | 7 BEDROOM 1
14'0" X 11'6" |
| 4 WET KITCHEN
3'2" X 9'6" | 8 BAY WINDOW
3'0" X 6'0" |



UNIT - 9 2 BHK

UNIT - 7 3 BHK



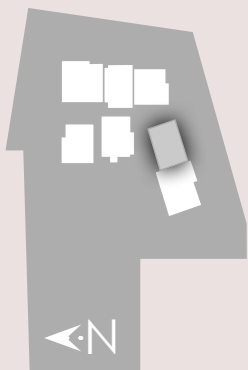
- | | |
|----------------------------------|------------------------------|
| 1 LIVING/DINING
13'6" X 34'6" | 6 BEDROOM 2
11'4" X 11'8" |
| 2 BEDROOM 1
11'8" X 13'0" | 7 A.TOILET
7'8" X 4'6" |
| 3 A.TOILET
8'6" X 4'6" | 8 C.TOILET
7'8" X 4'6" |
| 4 KITCHEN
11'4" X 9'0" | 9 BEDROOM 3
11'4" X 11'8" |
| 5 WET KITCHEN
11'4" X 3'6" | 10 BAY WINDOW
5'0" X 2'0" |



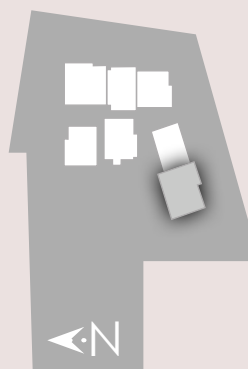
UNIT - 10 2 BHK

- | |
|------------------------------|
| 3 WET KITCHEN
9'2" X 4'6" |
| 4 C.TOILET
8'4" X 4'6" |
| 5 BEDROOM 2
12'0" X 11'4" |
| 6 BEDROOM 1
12'0" X 11'4" |
| 7 A.TOILET
8'4" X 4'0" |
| 8 BAY WINDOW
3'0" X 6'0" |

- | |
|----------------------------------|
| 1 LIVING/DINING
14'4" X 23'6" |
| 2 KITCHEN
9'2" X 9'6" |



- | | | |
|------------------------------|-------------------------------|------------------------------|
| 1 LIVING
18'0" X 13'8" | 7 PASSAGE
6'6" X 11'0" | 13 A.TOILET
7'6" X 4'6" |
| 2 DINING
14'6" X 10'4" | 8 BEDROOM 3
14'0" X 11'4" | 14 BAY WINDOW
2'0" X 5'0" |
| 3 BAY WINDOW
4'0" X 7'0" | 9 BEDROOM 2
12'4" X 11'4" | |
| 4 KITCHEN
10'0" X 7'6" | 10 A.TOILET
4'9" X 7'9" | |
| 5 WET KITCHEN
3'8" X 8'0" | 11 BALCONY
7'0" X 3'6" | |
| 6 C.TOILET
7'6" X 4'6" | 12 BEDROOM 1
12'0" X 11'6" | |



UNIT - 11 3 BHK

KEY PLAN





COLUMBIA ASIA HOSPITAL :6 MIN
ASTER CMI HOSPITAL :5 MIN
MOTHER HOOD HOSPITAL :1 MIN
PROLIFE HOSPITAL :3 MIN



RMZ GALLERIA MALL :10 MIN
MORE :2 MIN
ELEMENTS MALL :15 MIN
INOX GARUDA :14 MIN
ESTEEM MALL : 5 MIN
L & T MALL : 5MIN



HEBBALA - 10 MIN
KIA AIRPORT - 24KM



KENDRIYA VIDYALAYA - 20 MIN
NATIONAL PUBLIC SCHOOL - 12 MIN
DELHI PUBLIC SCHOOL - 20 MIN
TRIO WORLD SCHOOL - 3MIN



MANYATHA TECH PARK -15 MIN
RMZ LATITUDE - 4 MIN
BRIGADE MAGNUM - 2 MIN
BRIGADE OPUS -2 MIN

INDUSLAND BANK

YES BANK

MOTHERHOOD
HOSPITAL

KIRLOSKAR
BUSINESS PARK

ASTER CMI

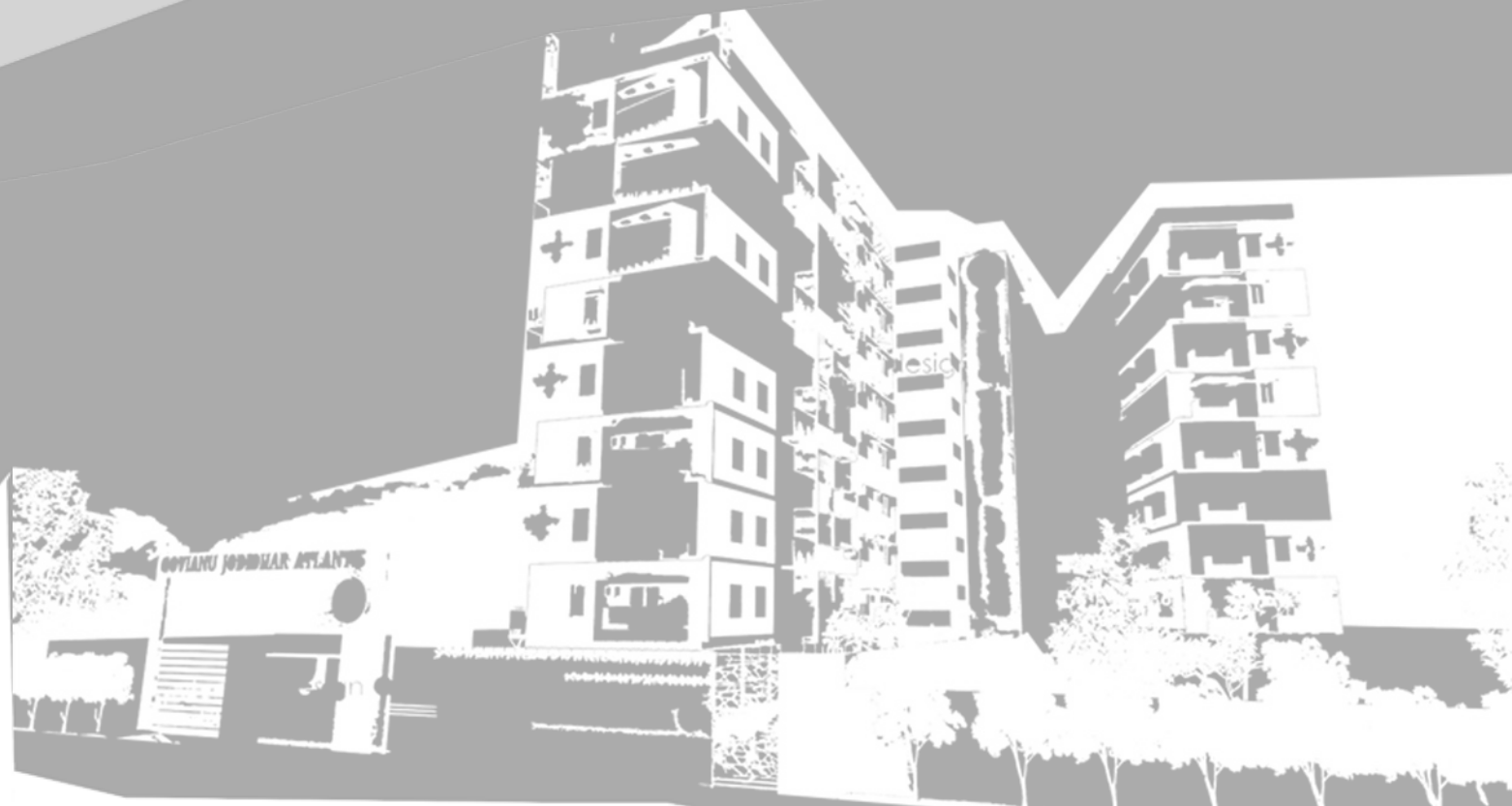
COLUMBIA ASIA

NAGAVARA LAKE

HEBBAL LAKE

HEBBAL PLYOVER

RMV EXTENSION





GOVIANU JODIDHAR ATLANTIS



CONTACT: +91 8088330330

WEB SITE: WWW.GOVIANU.COM

E-MAIL: info@govianu.com